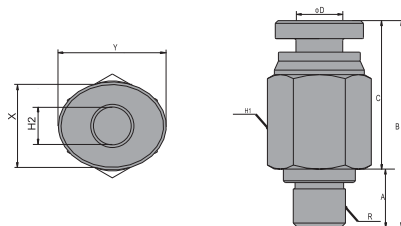
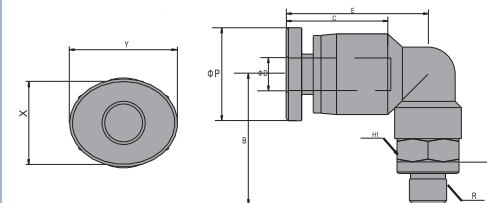


PC 公头直型



型式	ØD	R	A	B	C	H1	H2	X	Y	重量/g
PC 04M5	4	M5	5.5	22.2	16	10	2	10	12	8.39
PC 04M6	4	M6	6.5	23.2	16	10	3	10	12	8.39
PC 0401	4	R1/8	8	22.2	16	10	3	10	12	9.05
PC 0402	4	R1/4	11	22.2	16	14	3	10	12	16.49
PC 0403	4	R3/8	12	22.2	16	17	3	10	12	16.5
PC 06M5	6	M5	5.5	24.7	17	12	2	12	14	11.98
PC 06M6	6	M6	6.5	25.7	17	12	3	12	14	12.24
PC 0601	6	R1/8	8	23.2	17	12	4	12	14	10.66
PC 0602	6	R1/4	11	25.2	17	14	4	12	14	17.75
PC 0603	6	R3/8	12	24.7	17	17	4	12	14	29.6
PC 0604	6	R1/2	15	0	17	21	4	12	14	51.64
PC 0801	8	R1/8	8	28.5	18.5	14	4	14	16	15.5
PC 0802	8	R1/4	11	27	18.5	14	6	14	16	16.29
PC 0803	8	R3/8	12	25.3	18.5	17	6	14	16	27.38
PC 0804	8	R1/2	15	28.3	18.5	21	6	14	16	50.91
PC 1001	10	R1/8	8	31	21	17	4	17	19	26.24
PC 1002	10	R1/4	11	34	21	17	6	17	19	30.59
PC 1003	10	R3/8	12	30	21	17	8	17	19	28.5
PC 1004	10	R1/2	15	29.5	21	21	8	17	19	47.63
PC 1201	12	R1/8	8	32.5	22	21	4	21	23	36.09
PC 1202	12	R1/4	11	35.5	22	21	6	21	23	39.51
PC 1203	12	R3/8	12	31.1	22	21	8	21	23	38.58
PC 1204	12	R1/2	15	33.1	22	21	8	21	23	54.05
PC 1603	16	R3/8	12	37.8	23.1	24	8	24	27	63.04
PC 1604	16	R1/2	15	40.3	23.1	24	10	24	27	77.61

PL 弯头型



型式	ØD	R	ØP	A	B	C	E	H	X	Y	重量(g)
PL 04M5	4	M5	10.4	5.5	17.5	16	18.7	8	10	12	7.08
PL 04M6	4	M6	10.4	6.5	18.5	16	18.7	8	10	12	7.78
PL 0401	4	R1/8	10.4	8	24.6	16	18.7	10	10	12	12.31
PL 0402	4	R1/4	10.4	11	27.6	16	18.7	14	10	12	19.06
PL 0403	4	R3/8	10.4	12	28.6	16	18.7	17	10	12	29.12
PL 06M5	6	M5	12.4	5.5	22	17	20	10	12	14	7.71
PL 06M6	6	M6	12.4	6.5	23.5	17	20	10	12	14	7.97
PL 0601	6	R1/8	12.4	8	24	17	21.1	12	12	14	14.19
PL 0602	6	R1/4	12.4	11	28	17	21.1	14	12	14	23.96
PL 0603	6	R3/8	12.4	12	30	17	21.1	17	12	14	35.49
PL 0604	6	R1/2	12.4	15	0	17	21.1	21	12	14	58.59
PL 0801	8	R1/8	14.4	8	27	18.5	22.8	14	14	16	18.78
PL 0802	8	R1/4	14.4	11	31	18.5	22.8	14	14	16	26.04
PL 0803	8	R3/8	14.4	12	32	18.5	22.8	17	14	16	33.44
PL 0804	8	R1/2	14.4	15	36	18.5	22.8	21	14	16	53.72
PL 1001	10	R1/8	17.6	8	32	21	26.1	17	17	19	31.91
PL 1002	10	R1/4	17.6	11	35	21	26.1	17	17	19	37.54
PL 1003	10	R3/8	17.6	12	36	21	26.1	17	17	19	46.15
PL 1004	10	R1/2	17.6	15	39	21	26.1	21	17	19	59.89
PL 1201	12	R1/8	21	8	34	22.5	29.3	21	21	23	45.44
PL 1202	12	R1/4	21	11	37	22.5	29.3	21	21	23	50.26
PL 1203	12	R3/8	21	12	38	22.5	29.3	21	21	23	54.17
PL 1204	12	R1/2	21	15	41	22.5	29.3	21	21	23	65.3
PL 1603	16	R3/8	25.6	12	44.3	22.6	31.1	24	24	27	82.34
PL 1604	16	R1/2	25.6	15	47.3	22.6	31.1	24	24	27	90.24

接头

TUBE FITTING

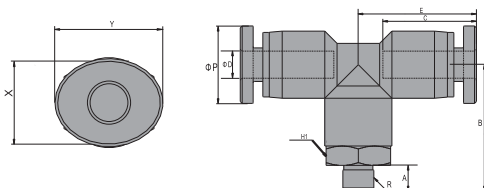
快插接头系列

持续创新 引领未来



标准型

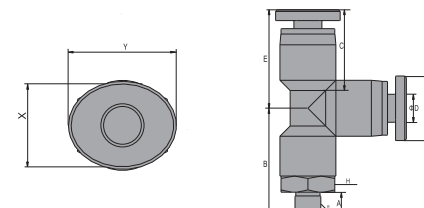
PT 公头T型



型式	ΦD	R	ΦP	A	B	C	E	H	X	Y	重量/g
PT 04M5	4	M5	10.4	5.5	22.1	16	18.5	10	10	12	12.62
PT 04M6	4	M6	10.4	6.5	23.1	16	18.5	10	10	12	12.62
PT 0401	4	R1/8	10.4	8	24.6	16	18.5	10	10	12	14.46
PT 0402	4	R1/4	10.4	11	27.6	16	18.5	14	10	12	22.72
PT 0403	4	R3/8	10.4	12	28.6	16	18.5	17	10	12	31.3
PT 06M5	6	M5	12.4	5.5	23	17	20.4	12	12	14	16.68
PT 06M6	6	M6	12.4	6.5	24.5	17	20.4	12	12	14	16.68
PT 0601	6	R1/8	12.4	8	25	17	20.4	12	12	14	18.25
PT 0602	6	R1/4	12.4	11	29	17	20.4	14	12	14	26.53
PT 0603	6	R3/8	12.4	12	31	17	20.4	17	12	14	37.94
PT 0604	6	R1/2	12.4	15	35	17	20.4	21	12	14	37.94
PT 0801	8	R1/8	14.4	8	25.5	18.5	22.8	14	14	16	22.56
PT 0802	8	R1/4	14.4	11	29.5	18.5	22.8	14	14	16	29.56
PT 0803	8	R3/8	14.4	12	30.5	18.5	22.8	17	14	16	40.1
PT 0804	8	R1/2	14.4	15	34.5	18.5	22.8	21	14	16	57.41
PT 1001	10	R1/8	17.6	8	32	21	26	17	17	19	41.54
PT 1002	10	R1/4	17.6	11	35	21	26	17	17	19	43.8
PT 1003	10	R3/8	17.6	12	36	21	26	17	17	19	52.67
PT 1004	10	R1/2	17.6	15	39	21	26	21	17	19	65.29
PT 1201	12	R1/8	21.2	8	34	22.5	29	21	21	23	55.23
PT 1202	12	R1/4	21.2	11	37	22.5	29	21	21	23	59.71
PT 1203	12	R3/8	21.2	12	38	22.5	29	21	21	23	63.55
PT 1204	12	R1/2	21.2	15	41	22.5	29	21	21	23	74.45
PT 1603	16	R3/8	25.6	12	44.3	22.6	31.1	24	24	27	99.7
PT 1604	16	R1/2	25.6	15	47.3	22.6	31.1	24	24	27	110.83

快插接头

PST T型



型式	ΦD	R	ΦP	A	B	C	E	H	X	Y	重量/g
PST 04M5	4	M5	10.4	5.5	22.1	16	18.5	10	10	12	12.61
PST 04M6	4	M6	10.4	6.5	23.1	16	18.5	10	10	12	12.61
PST 0401	4	R1/8	10.4	8	24.6	16	18.5	10	10	12	14.54
PST 0402	4	R1/4	10.4	11	27.6	16	18.5	14	10	12	22.55
PST 0403	4	R3/8	10.4	12	28.6	16	18.5	17	10	12	22.55
PST 06M5	6	M5	12.4	5.5	23	17	20.4	12	12	14	16.59
PST 06M6	6	M6	12.4	6.5	24.5	17	20.4	12	12	14	16.59
PST 0601	6	R1/8	12.4	8	25	17	20.4	12	12	14	18.59
PST 0602	6	R1/4	12.4	11	29	17	20.4	14	12	14	26.7
PST 0603	6	R3/8	12.4	12	31	17	20.4	17	12	14	37.48
PST 0801	8	R1/8	14.4	8	25.5	18.5	22.8	14	14	16	22.61
PST 0802	8	R1/4	14.4	11	29.5	18.5	22.8	14	14	16	29.42
PST 0803	8	R3/8	14.4	12	30.5	18.5	22.8	17	14	16	37.03
PST 0804	8	R1/2	14.4	15	34.5	18.5	22.8	21	14	16	57.79
PST 1001	10	R1/8	17.6	8	32	21	26	17	17	19	41.45
PST 1002	10	R1/4	17.6	11	35	21	26	17	17	19	44.31
PST 1003	10	R3/8	17.6	12	36	21	26	17	17	19	52.82
PST 1004	10	R1/2	17.6	15	39	21	26	21	17	19	66.29
PST 1201	12	R1/8	21.2	8	34	22.5	28.7	21	21	23	66.29
PST 1202	12	R1/4	21.2	11	37	22.5	28.7	21	21	23	59.62
PST 1203	12	R3/8	21.2	12	38	22.5	28.7	21	21	23	63.55
PST 1204	12	R1/2	21.2	15	41	22.5	28.7	21	21	23	74.68

气动辅助元件

辅助元件

接头

气管

接头

TUBE FITTING

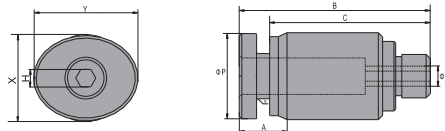
快插接头系列

持续创新 引领未来



标准型

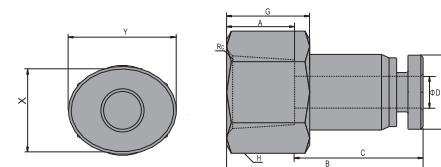
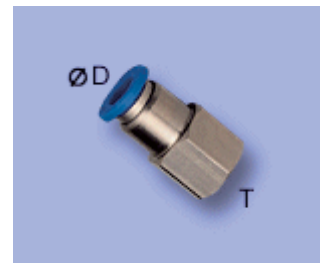
POC 圆头直型



型式	ΦD	R	ΦP	A	B	C	H	X	Y	重量/g
POC 04M5	4	M5	10	5.5	22.2	16	2	10	12	7.78
POC 04M6	4	M6	10	6.5	23.2	16	3	10	12	5.9
POC 0401	4	R1/8	10	8	22.2	16	3	10	12	8.43
POC 0402	4	R1/4	14	11	22.2	16	3	10	12	16.01
POC 0403	4	R3/8	15	12	22.2	16	3	10	12	25.5
POC 06M5	6	M5	12	5.5	24.7	17	2	12	14	10.82
POC 06M6	6	M6	12	6.5	25.7	17	3	12	14	10.98
POC 0601	6	R1/8	11	8	23.2	17	4	12	14	9.67
POC 0602	6	R1/4	14	11	25.2	17	4	12	14	17.65
POC 0603	6	R3/8	17	12	24.7	17	4	12	14	27.1
POC 0801	8	R1/8	14	8	28.5	18.5	4	14	16	15.81
POC 0802	8	R1/4	14	11	27	18.5	6	14	16	15.04
POC 0803	8	R3/8	17	12	25.3	18.5	6	14	16	25.86
POC 0804	8	R1/2	21	15	28.3	18.5	6	14	16	44.59
POC 1001	10	R1/8	17	8	31	21	4	17	19	23.37
POC 1002	10	R1/4	17	11	34	21	6	17	19	27.14
POC 1003	10	R3/8	17	12	30	21	6	17	19	25.96
POC 1004	10	R1/2	21	15	29.5	21	6	17	19	46.39
POC 1201	12	R1/8	20	8	32.5	22.5	4	21	23	33.1
POC 1202	12	R1/4	20	11	35.5	22.5	6	21	23	36.33
POC 1203	12	R3/8	21	12	31.1	22.5	8	21	23	34.83
POC 1204	12	R1/2	21	15	33.1	22.5	8	21	23	50.42

快插接头

PCF 母头直型



型式	ΦD	R	ΦP	G	A	B	C	H	X	Y	重量/g
PCF 0401	4	Rc1/8	10	11	9	26.2	16	Hex14	10	12	16.62
PCF 0402	4	Rc1/4	10	14	12	29.2	16	Hex17	10	12	23.65
PCF 0403	4	Rc3/8	10	15	13	30.2	16	Hex21	10	12	32.4
PCF 0601	6	Rc1/8	12	10	9	27.2	17	Hex14	12	14	17.43
PCF 0602	6	Rc1/4	12	14	12	30.2	17	Hex17	12	14	26.32
PCF 0603	6	Rc3/8	12	15	13	31.2	17	Hex21	12	14	35.9
PCF 0801	8	Rc1/8	14	12	9	28.5	18.5	Hex14	14	16	20.95
PCF 0802	8	Rc1/4	14	15	12	31.3	18.5	Hex17	14	16	28.66
PCF 0803	8	Rc3/8	14	16	13	32.5	18.5	Hex21	14	16	39.62
PCF 0804	8	Rc1/2	14	19	16	35.5	18.5	Hex24	14	16	51.78
PCF 1001	10	Rc1/8	17	0	0	0	21	Hex	17	19	32.15
PCF 1002	10	Rc1/4	17	13	12	34	21	Hex17	17	19	32.01
PCF 1003	10	Rc3/8	17	15	13	35	21	Hex21	17	19	44.85
PCF 1004	10	Rc1/2	17	0	0	0	21	Hex	17	19	56.53
PCF 1202	12	Rc1/4	20	13	12	35.5	22.5	Hex21	21	23	58.61
PCF 1203	12	Rc3/8	20	14	13	36.5	22.5	Hex21	21	23	52.83
PCF 1204	12	Rc1/2	20	19	16	39.5	22.5	Hex24	21	23	63.31

气动辅助元件

辅助元件

接头

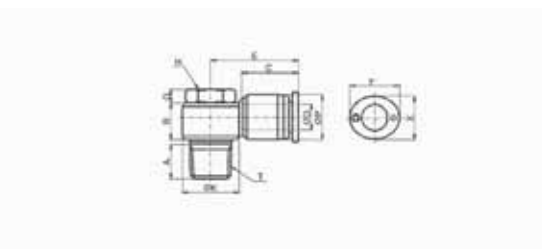
气管

接头

TUBE FITTING

快插接头系列

PH 圆公头直型



型式	ΦD	R	ΦP	A	B	C	E	H	ΦK	G	X	Y	重量/g
PH 04M5	4	M5	10.4	5.5	9	16	20.7	8	10	3	10	12	8.48
PH 04M6	4	M6	10.4	6.5	9	16	20.7	8	10	3	10	12	7.9
PH 0401	4	R1/8	10.4	8	12	16	22.4	10	14.4	4	10	12	17.63
PH 06M5	6	M5	12.4	5.5	9	17	23.2	8	10	3	12	14	9.14
PH 06M6	6	M6	12.4	6.5	9	17	23.2	8	10	3	12	14	8.96
PH 0601	6	R1/8	12.4	8	12	17	23.6	10	14.4	4	12	14	18.43
PH 0602	6	R1/4	12.4	11	11.8	17	25.7	14	18.4	4.5	12	14	31.38
PH 0603	6	R3/8	12.4	12	15.5	17	28.2	19	22	5	12	14	54.41
PH 0801	8	R1/8	14.4	8	12	18.5	25	10	14.4	4	14	16	19.42
PH 0802	8	R1/4	14.4	11	11.8	18.5	28.2	14	18.4	4.5	14	16	32.8
PH 0803	8	R3/8	14.4	12	15.5	18.5	28.6	19	22	5	14	16	57.79
PH 0804	8	R1/2	14.4	15	17.7	18.5	31	24	28	5	14	16	96.9
PH 1002	10	R1/4	17.6	11	11.8	21	31.2	14	18.4	4.5	17	19	38.46
PH 1003	10	R3/8	17.6	12	15.5	21	31.6	19	22	5	17	19	60.61
PH 1004	10	R1/2	17.6	15	17.7	21	34.5	24	28	5	17	19	98.59
PH 1203	12	R3/8	21	12	15.5	22.5	36	19	22	5	21	23	63.61
PH 1204	12	R1/2	21	15	17.7	22.5	36	24	28	5	21	23	100.36

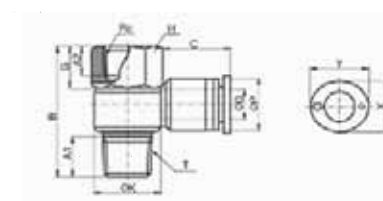
快插接头

持续创新 引领未来



标准型

PHF 母头型



型式	ΦD	R	RC	ΦP	A1	A2	B	C	H	G	ΦK	X	Y	重量/g
PHF 04M5	4	M5	M5	10.4	5.5	5	21	16	8	6.5	10	10	12	9.3
PHF 04M6	4	M6	M6	10.4	6.5	6	22.5	16	8	7.5	10	10	12	8.4
PHF 0401	4	R1/8	Rc1/8	10.4	8	9	30.5	16	14	9.5	14.4	10	12	22.82
PHF 06M5	6	M5	M5	12.4	5.5	5	21	17	8	6.5	10	12	14	9.97
PHF 06M6	6	M6	M6	12.4	6.5	6	22.5	17	8	7.5	10	12	14	8.8
PHF 0601	6	R1/8	Rc1/8	12.4	8	9	30.5	17	14	9.5	14.4	12	14	23.54
PHF 0602	6	R1/4	Rc1/4	12.4	11	12	36	17	17	11.5	18.4	12	14	36.74
PHF 0801	8	R1/8	Rc1/8	14.4	8	9	30.5	18.5	14	9.5	14.4	14	16	24.45
PHF 0802	8	R1/4	Rc1/4	14.4	11	12	36	18.5	17	11.5	18.4	14	16	37.98
PHF 0803	8	R3/8	Rc3/8	14.4	12	13	41.8	18.5	21	13.5	22	14	16	65.89
PHF 1002	10	R1/4	Rc1/4	17.6	11	12	36	20	17	11.5	18.4	17	19	43.97
PHF 1003	10	R3/8	Rc3/8	17.6	12	13	41.8	20	21	13.5	22	17	19	68.93
PHF 1203	12	R3/8	Rc3/8	21	12	12	41.8	22.5	21	13.5	22	21	23	71.9
PHF 1204	12	R1/2	Rc1/2	21	15	15	51	22.5	24	17	28	21	23	109.2

气动辅助元件

辅助元件

接头

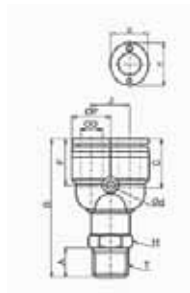
气管

接头

TUBE FITTING

快插接头系列

PWT Y型



型式	ΦD	R	ΦP	A	B	C	Φd	J	F	H	X	Y	重量/g
PWT 04M5	4	M5	10.4	5.5	40.3	16	2.2	9.6	15.2	10	10	12	14.33
PWT 04M6	4	M6	10.4	6.5	41.3	16	2.2	9.6	15.2	10	10	12	14.33
PWT 0401	4	R1/8	10.4	8	42.8	16	2.2	9.6	15.2	10	10	12	16.2
PWT 0402	4	R1/4	10.4	11	45.8	16	2.2	9.6	15.2	14	10	12	23.08
PWT 0403	4	R3/8	10.4	12	46.8	16	2.2	9.6	15.2	17	10	12	23.08
PWT 06M5	6	M5	12.4	5.5	41.7	17	3.2	12	17	12	12	14	16.81
PWT 06M6	6	M6	12.4	6.5	43.2	17	3.2	12	17	12	12	14	16.81
PWT 0601	6	R1/8	12.4	8	43.7	17	3.2	12	17	12	12	14	18.8
PWT 0602	6	R1/4	12.4	11	47.7	17	3.2	12	17	14	12	14	26.51
PWT 0603	6	R3/8	12.4	12	49.7	17	3.2	12	17	17	12	14	38.13
PWT 0801	8	R1/8	14.4	8	47.8	18.5	3.2	14	17.3	14	14	16	23.24
PWT 0802	8	R1/4	14.4	11	51.8	18.5	3.2	14	17.3	14	14	16	30.36
PWT 0803	8	R3/8	14.4	12	52.8	18.5	3.2	14	17.3	17	14	16	40.96
PWT 0804	8	R1/2	14.4	15	56.8	18.5	3.2	14	17.3	21	14	16	58.57
PWT 1001	10	R1/8	17.6	8	55.2	21	4.2	18	21.5	17	17	19	42.95
PWT 1002	10	R1/4	17.6	11	58.2	21	4.2	18	21.5	17	17	19	45.5
PWT 1003	10	R3/8	17.6	12	59.2	21	4.2	18	21.5	17	17	19	53.87
PWT 1004	10	R1/2	17.6	15	62.2	21	4.2	18	21.5	21	17	19	68.14
PWT 1201	12	R1/8	21.2	8	57.7	22.5	4.2	20.8	21	21	21	23	68.14
PWT 1202	12	R1/4	21.2	11	60.7	22.5	4.2	20.8	21	21	21	23	59.49
PWT 1203	12	R3/8	21.2	12	61.7	22.5	4.2	20.8	21	21	21	23	64.67
PWT 1204	12	R1/2	21.2	15	64.7	22.5	4.2	20.8	21	21	21	23	76.43

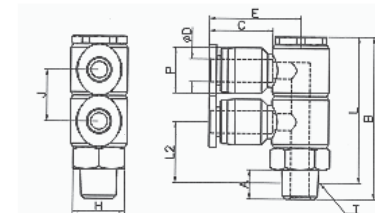
快插接头

持续创新 引领未来



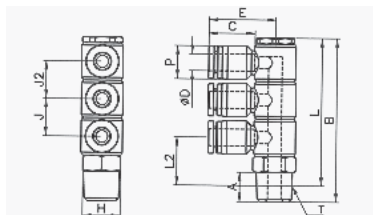
标准型

PHT(D2) 双头联管



型式	ΦD	R	A	B	C	H	L	L2	J	E	ΦP	X	Y
PHT 0401(2)	4	R1/8	8	44.2	15.6	H14	39.8	16.6	14	22.3	10.4	9.8	12
PHT 0402(2)	4	R1/4	11	47.2	15.6	H14	41.2	18	14	22.3	10.4	9.8	12
PHT 0403(2)	4	R3/8	12	48.2	15.6	H14	41.8	18.5	14	22.3	10.4	9.8	12
PHT 0601(2)	6	R1/8	8	44.2	17.2	H14	39.8	16.6	14	26.5	12.4	11.8	14
PHT 0602(2)	6	R1/4	11	47.2	17.2	H14	41.2	18	14	26.5	12.4	11.8	14
PHT 0603(2)	6	R3/8	12	48.2	17.2	H17	41.8	18.5	14	26.5	12.4	11.8	14
PHT 0801(2)	8	R1/8	8	46.2	18.4	H17	41.8	17.1	15	29.1	14.4	14	16
PHT 0802(2)	8	R1/4	11	49.2	18.4	H17	43.2	18.5	15	29.1	14.4	14	16
PHT 0803(2)	8	R3/8	12	50.2	18.4	H17	43.7	19	15	29.1	14.4	14	16
PHT 0804(2)	8	R1/2	15	53.2	18.4	H21	45.1	20.4	15	29.1	14.4	14	16
PHT 1002(2)	10	R1/4	11	58.6	21	H21	52.6	23	18	34.3	17.6	16.6	19
PHT 1003(2)	10	R3/8	12	59.6	21	H21	53.1	23.85	18	34.3	17.6	16.6	19
PHT 1004(2)	10	R1/2	15	62.6	21	H21	54.5	24.25	18	34.3	17.6	16.6	19
PHT 1202(2)	12	R1/4	11	68.8	22.5	H27	62.8	26.9	21.8	38.3	21.2	20.5	23
PHT 1203(2)	12	R3/8	12	69.8	22.5	H27	63.3	27.4	21.8	38.3	21.2	20.5	23
PHT 1204(2)	12	R1/2	15	72.8	22.5	H27	64.7	28.8	21.8	38.3	21.2	20.5	23

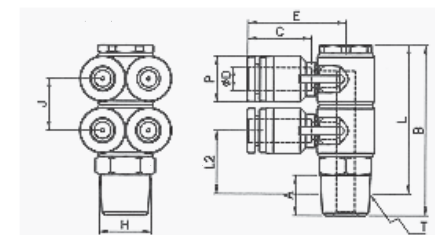
PHT(D3) 三联型



型式	ΦD	R	A	B	C	H	L	L2	J	J2	E	ΦP	X	Y
PHT 0401(3)	4	R1/8	8	58.2	15.6	H14	53.8	16.6	14	14	22.3	10.4	9.8	12
PHT 0402(3)	4	R1/4	11	61.2	15.6	H14	55.2	18	14	14	22.3	10.4	9.8	12
PHT 0403(3)	4	R3/8	12	62.2	15.6	H17	55.7	18.5	14	14	22.3	10.4	9.8	12
PHT 0601(3)	6	R1/8	8	58.2	17.2	H14	53.8	16.6	14	14	26.5	12.4	11.8	14
PHT 0602(3)	6	R1/4	11	61.2	17.2	H14	55.2	18	14	14	26.5	12.4	11.8	14
PHT 0603(3)	6	R3/8	12	62.2	17.2	H17	55.7	18.5	14	14	26.5	12.4	11.8	14
PHT 0801(3)	8	R1/8	8	61.3	18.4	H17	56.9	17.1	15	15	29.1	14.4	14	16
PHT 0802(3)	8	R1/4	11	64.3	18.4	H17	58.3	18.5	15	15	29.1	14.4	14	16
PHT 0803(3)	8	R3/8	12	65.3	18.4	H17	58.7	19	15	15	29.1	14.4	14	16
PHT 0804(3)	8	R1/2	15	68.2	18.4	H21	60.1	20.4	15	15	29.1	14.4	14	16
PHT 1002(3)	10	R1/4	11	76.2	21	H21	70.2	23	18	18	34.3	17.6	16.6	19
PHT 1003(3)	10	R3/8	12	77.2	21	H21	70.7	23.85	18	18	34.3	17.6	16.6	19
PHT 1004(3)	10	R1/2	15	80.2	21	H21	72.1	24.25	18	18	34.3	17.6	16.6	19
PHT 1202(3)	12	R1/4	11	90.6	22.5	H27	84.6	26.9	21.8	21.8	38.3	21.2	20.5	23
PHT 1203(3)	12	R3/8	12	91.3	22.5	H27	84.8	27.4	21.8	21.8	38.3	21.2	20.5	23
PHT 1204(3)	12	R1/2	15	94	22.5	H27	86.5	28.8	21.8	21.8	38.3	21.2	20.5	23

快插接头

PAT(D2) 双分歧



型式	ΦD	R	A	B	C	H	L	L2	J	E	ΦP	X	Y
PAT 0401(2)	4	R1/8	8	44.2	15.6	H14	39.8	16.6	14	22.3	10.4	9.8	12
PAT 0402(2)	4	R1/4	11	47.2	15.6	H14	41.2	18	14	22.3	10.4	9.8	12
PAT 0403(2)	4	R3/8	12	48.2	15.6	H14	41.8	18.5	14	22.3	10.4	9.8	12
PAT 0601(2)	6	R1/8	8	44.2	17.2	H14	39.8	16.6	14	26.5	12.4	11.8	14
PAT 0602(2)	6	R1/4	11	47.2	17.2	H14	41.2	18	14	26.5	12.4	11.8	14
PAT 0603(2)	6	R3/8	12	48.2	17.2	H17	41.8	18.5	14	26.5	12.4	11.8	14
PAT 0801(2)	8	R1/8	8	46.2	18.4	H17	41.8	17.1	15	29.1	14.4	14	16
PAT 0802(2)	8	R1/4	11	49.2	18.4	H17	43.2	18.5	15	29.1	14.4	14	16
PAT 0803(2)	8	R3/8	12	50.2	18.4	H17	43.7	19	15	29.1	14.4	14	16
PAT 0804(2)	8	R1/2	15	53.2	18.4	H21	45.1	20.4	15	29.1	14.4	14	16
PAT 1002(2)	10	R1/4	11	58.6	21	H21	52.6	23	18	34.3	17.6	16.6	19
PAT 1003(2)	10	R3/8	12	59.6	21	H21	53.1	23.85	18	34.3	17.6	16.6	19
PAT 1004(2)	10	R1/2	15	62.6	21	H21	54.5	24.25	18	34.3	17.6	16.6	19
PAT 1202(2)	12	R1/4	11	68.8	22.5	H27	62.8	26.9	21.8	38.3	21.2	20.5	23
PAT 1203(2)	12	R3/8	12	69.8	22.5	H27	63.3	27.4	21.8	38.3	21.2	20.5	23
PAT 1204(2)	12	R1/2	15	72.8	22.5	H27	64.7	28.8	21.8	38.3	21.2	20.5	23

接头

TUBE FITTING

快插接头系列

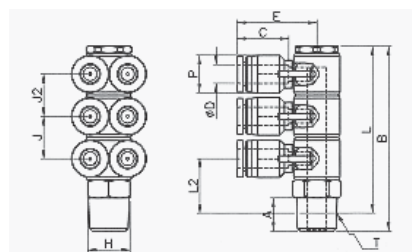
持续创新 引领未来



快插接头

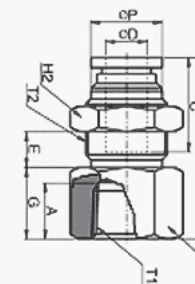
标准型

PAT(D3) 三分歧



型式	ΦD	R	A	B	C	H	L	L2	J	J2	E	ΦP	X	Y
PAT 0401(3)	4	R1/8	8	58.2	15.6	H14	53.8	16.6	14	14	22.3	10.4	9.8	12
PAT 0402(3)	4	R1/4	11	61.2	15.6	H14	55.2	18	14	14	22.3	10.4	9.8	12
PAT 0403(3)	4	R3/8	12	62.2	15.6	H17	55.7	18.5	14	14	22.3	10.4	9.8	12
PAT 0601(3)	6	R1/8	8	58.2	17.2	H14	53.8	16.6	14	14	26.5	12.4	11.8	14
PAT 0602(3)	6	R1/4	11	61.2	17.2	H14	55.2	18	14	14	26.5	12.4	11.8	14
PAT 0603(3)	6	R3/8	12	62.2	17.2	H17	55.7	18.5	14	14	26.5	12.4	11.8	14
PAT 0801(3)	8	R1/8	8	61.3	18.4	H17	56.9	17.1	15	15	29.1	14.4	14	16
PAT 0802(3)	8	R1/4	11	64.3	18.4	H17	58.3	18.5	15	15	29.1	14.4	14	16
PAT 0803(3)	8	R3/8	12	65.3	18.4	H17	58.7	19	15	15	29.1	14.4	14	16
PAT 0804(3)	8	R1/2	15	68.2	18.4	H21	60.1	20.4	15	15	29.1	14.4	14	16
PAT 1002(3)	10	R1/4	11	76.2	21	H21	70.2	23	18	18	34.3	17.6	16.6	19
PAT 1003(3)	10	R3/8	12	77.2	21	H21	70.7	23.85	18	18	34.3	17.6	16.6	19
PAT 1004(3)	10	R1/2	15	80.2	21	H21	72.1	24.25	18	18	34.3	17.6	16.6	19
PAT 1202(3)	12	R1/4	11	90.6	22.5	H27	84.6	26.9	21.8	21.8	38.3	21.2	20.5	23
PAT 1203(3)	12	R3/8	12	91.3	22.5	H27	84.8	27.4	21.8	21.8	38.3	21.2	20.5	23
PAT 1204(3)	12	R1/2	15	94	22.5	H27	86.5	28.8	21.8	21.8	38.3	21.2	20.5	23

PMF 母头直型



型式	ΦD	Rc	ΦP	G	A	B	C	E	H1	H2	M	重量/g
PMF 0401	4	Rc1/8	10	11	9	26.2	16	5	14	14	M12	19.56
PMF 0402	4	Rc1/4	10	14	12	29.2	16	5	17	14	M12	28.417
PMF 0403	4	Rc3/8	10	15	13	30.2	16	5	21	14	M12	35.2
PMF 0601	6	Rc1/8	12	9	9	27.1	17	7.5	17	17	M14	29.22
PMF 0602	6	Rc1/4	12	13.5	12	31.7	17	7.5	17	17	M14	32
PMF 0603	6	Rc3/8	12	15	13	33.2	17	7.5	19	17	M14	33.257
PMF 0801	8	Rc1/8	14	10	9	31.5	18.5	9.2	19	19	M16	43.35
PMF 0802	8	Rc1/4	14	14	12	35.5	18.5	9.2	19	19	M16	46.84
PMF 0803	8	Rc3/8	14	15	13	36.5	18.5	9.2	19	19	M16	39.93
PMF 0804	8	Rc1/2	14	19	16	40.5	18.5	9.2	24	19	M16	63.654
PMF 1001	10	Rc1/8	17	11	0	31	21	7	22	24	M20	63.884
PMF 1002	10	Rc1/4	17	14	12	34	21	7	24	24	M20	76.75
PMF 1003	10	Rc3/8	17	15	13	35	21	7	24	24	M20	72.2
PMF 1004	10	Rc1/2	17	19	0	39	21	7	24	24	M20	67.4
PMF 1201	12	Rc1/8	20	10	9	32.5	23.5	9.9	24	26	M22	80.9
PMF 1202	12	Rc1/4	20	13	12	35.5	23.5	9.9	24	26	M22	84.9
PMF 1203	12	Rc3/8	20	15	13	37.5	23.5	9.9	24	26	M22	83.08
PMF 1204	12	Rc1/2	20	19	16	41.5	23.5	9.9	24	26	M22	80.38

气动辅助元件

辅助元件

接头

气管

接头

TUBE FITTING

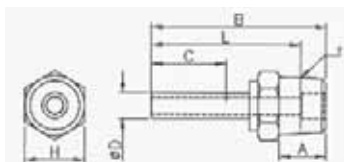
快插接头系列

持续创新 引领未来



标准型

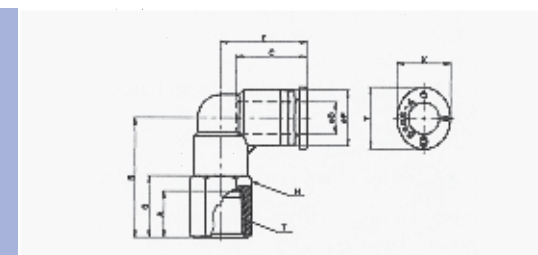
PCJ 公头插座型



型式	ΦD	R	A	B	L	C	H
PCJ 04M5	4	M5	4	36.9	32.9	15.6	10
PCJ 0401	4	R1/8	8	33	28.6	15.6	10
PCJ 0402	4	R1/4	11	36	30	15.6	14
PCJ 06M5	6	M5	4	41.9	37.9	17.2	10
PCJ 0601	6	R1/8	8	38	33.6	17.2	10
PCJ 0602	6	R1/4	11	41	35	17.2	14
PCJ 0603	6	R3/8	12	42	35.5	17.2	17
PCJ 0802	8	R1/4	11	43	37	18.4	14
PCJ 0803	8	R3/8	12	44	37.5	18.4	17
PCJ 1002	10	R1/4	11	55	49	21	17
PCJ 1003	10	R3/8	12	49	42.5	21	17
PCJ 1004	10	R1/2	15	52	43.9	21	21
PCJ 1202	12	R1/4	11	62	56	22.5	19
PCJ 1203	12	R3/8	12	60.9	54.4	22.5	19
PCJ 1204	12	R1/2	15	57	48.9	22.5	21
PCJ 1603	16	R3/8	12	66	59.5	25	21
PCJ 1604	16	R1/2	15	67	58.9	25	21

快插接头

PLF 母头弯管型



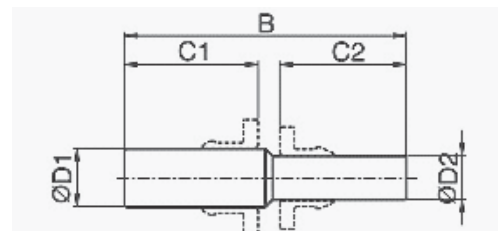
型式	ΦD	R	ΦP	A	B	C	E	H	X	Y	重量/g
PLF 04M5	4	M5	10	5	16	15.6	18.5	10	9.8	12	7.08
PLF 04M6	4	M6	10	6	17	15.6	18.5	10	9.8	12	7.78
PLF 0401	4	R1/8	10.4	9	23.6	15.6	18.5	14	9.8	12	12.31
PLF 0402	4	R1/4	10.4	12	26.6	15.6	18.5	17	9.8	12	19.06
PLF 06M5	6	M5	12.8	5	16	17.2	20.3	12	11.8	14	7.71
PLF 06M6	6	M6	12.8	6	17	17.2	20.3	12	11.8	14	7.97
PLF 0601	6	R1/8	12.8	9	23	17.2	20.3	14	11.8	14	14.19
PLF 0602	6	R1/4	12.8	12	26	17.2	20.3	17	11.8	14	23.96
PLF 0603	6	R3/8	12.8	13	27	17.2	20.3	21	11.8	14	35.49
PLF 0801	8	R1/8	14.4	9	26	18.4	22.6	14	14	16	18.78
PLF 0802	8	R1/4	14.4	12	29	18.4	22.6	17	14	16	26.04
PLF 0803	8	R3/8	14.4	13	30	18.4	22.6	21	14	16	33.44
PLF 1002	10	R1/4	17.6	12	33	21	27	17	16.6	19	37.54
PLF 1003	10	R3/8	17.6	13	34.5	21	27	21	16.6	19	46.15
PLF 1004	10	R1/2	17.6	16	38	21	27	24	16.6	19	59.89

接头

TUBE FITTING

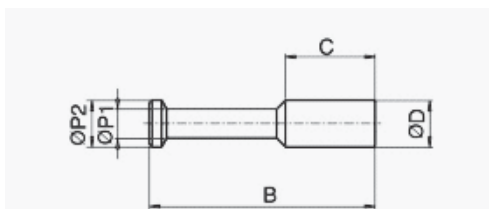
快插接头系列

PIG 异径接管型



型式	ΦD1	ΦD2	B	C1	C2	重量/g
PIG 0604	6	4	36	17	16	2.16
PIG 0806	8	6	39	18.5	17	2.97
PIG 1008	10	8	43	21	18.5	4.27
PIG 1210	12	10	48	22.5	21	7.89
PIG 1612	16	12	54	26.5	22.5	11.18

PP 插头型



型式	ΦD	B	ΦP1	ΦP2	C	重量/g
PP 04	4	28	3	4	15	1.84
PP 06	6	32	4	6	17	2.14
PP 08	8	39	5	8	18	2.91
PP 10	10	42	8	10	20	5.02
PP 12	12	44	8	12	22	6.6

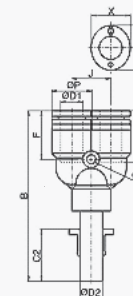
快插接头

持续创新 引领未来



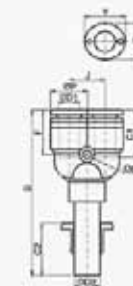
标准型

PYJ 内插头Y型



重量	ΦD1	ΦD2	ΦP	B	C1	C2	Φd	J	F	X	Y	重量/g
PYJ 04	4	4	10.4	48.8	16	16	2.2	9.6	15.2	10	12	8.66
PYJ 06	6	6	12.4	54.7	17	17	3.2	12	16.9	12	14	11.43
PYJ 08	8	8	14.4	60.8	18.5	18.5	3.2	14	20.2	14	16	15.32
PYJ 10	10	10	17.6	71.2	21	21	4.2	18	21.5	17	19	29.08
PYJ 12	12	12	21.2	75.7	22.5	22.5	4.2	20.8	21.5	21	23	38.22

PWJ 内插头异径Y型



型式	ΦD1	ΦD2	ΦP	B	C1	C2	Φd	J	F	X	Y	重量/g
PWJ 0604	4	6	10.4	55.2	15.6	17.2	2.2	9.6	16.2	9.8	12	10.28
PWJ 0806	6	8	12.4	58.7	17.2	18.4	3.2	12	16.9	11.9	14	15.18
PWJ 1008	8	10	14.4	64.7	18.4	21	3.2	14	17.2	14	16	16.36
PWJ 1210	10	12	17.6	75.2	21	22.5	4.2	18	21.6	16.6	19	31.54

气动辅助元件

辅助元件
接头
气管

接头

TUBE FITTING

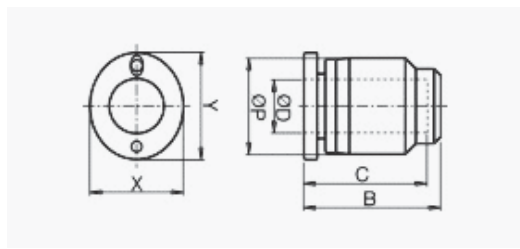
快插接头系列

持续创新 引领未来



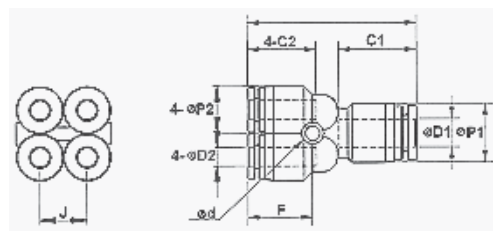
标准型

PPF 堵头



型式	ΦD	ΦP	B	C	X	Y	重量/g
PPF 04	4	10.4	17.7	16	10	12	3.72
PPF 06	6	12.4	18.7	17	12	14	4.47
PPF 08	8	14.4	20.5	18.5	14	16	7.12
PPF 10	10	17.6	23.5	21	17	19	10.16
PPF 12	12	21.2	25.5	22.5	21	23	12.09

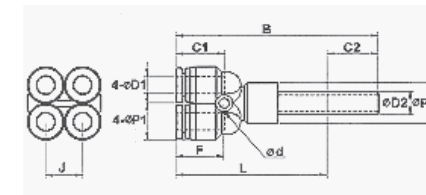
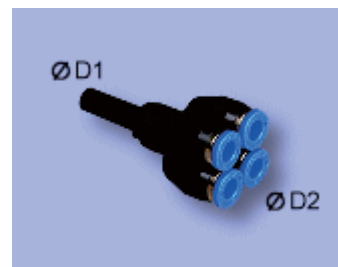
PXG 异径双联管Y型



型式	ΦD	D1	D2	B	ΦP1	ΦP2	C1	C2	J	Φd	F	重量/g
PXG 0604	4	6	4	37.2	13	10.4	17.2	15	10.4	3.2	14.2	15.73
PXG 0806	6	8	6	40.6	14.4	13	18.4	17.2	13	3.5	16.9	23.45

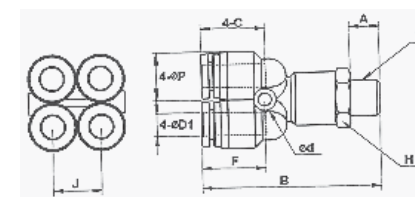
快插接头

PXJ 双异径Y型



型式	ΦD1	ΦD2	B	L	ΦP1	ΦP2	C1	C2	J	Φd	F	重量/g
PXJ 0604	4	6	55.2	43.6	10.4	13	15	11.6	10.4	3.2	14.2	12.8
PXJ 0806	6	8	60.9	48	13	14.4	17.2	12.9	13	3.5	16.9	17.5

PXT 公头双Y型



型式	ΦD	T	A	B	ΦP	C	J	H	Φd	F	重量/g
PXT 04-01	4	R1/8	8	44.2	10.4	15	10.4	12	3.2	14.2	25.9
PXT 04-02	4	R1/4	11	48.2	10.4	15	10.4	14	3.2	14.2	31.6
PXT 06-01	6	R1/8	8	47.9	13	17.2	13	14	3.5	16.9	31.39

气动辅助元件

辅助元件

接头

气管

接头

TUBE FITTING

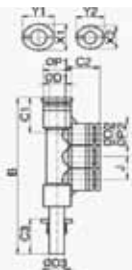
快插接头系列

PKG 异径三分歧联管



型式	ΦD1	ΦD2	B	C1	C2	ΦP1	ΦP2	J	F1	F2	Φd	X1	Y1	X2	Y2	重量/g
PKG 0604	6	4	59.4	17	16	12.4	10.4	10	8	34	3.2	12	14	10	12	19.69
PKG 0804	8	4	62	18.5	16	14.4	10.4	10	9	34	3.2	14	16	10	12	22.77
PKG 0806	8	6	62	18.5	17	14.4	12.4	12	9	40	3.2	14	16	12	14	24.55
PKG 1006	10	6	79.2	21	17	17.6	12.4	12	10.5	42	4.2	17	19	12	14	35.08
PKG 1008	10	8	79.2	21	18.5	17.6	14.4	14	10.5	48	4.2	17	19	14	16	38.59

PKJ 内插头异径三分歧型



型式	ΦD1	ΦD2	ΦD3	B	C1	C2	C3	ΦP1	ΦP2	J	X1	Y1	X2	Y2	重量/g
PKJ 0604	6	4	6	75.7	17	16	17	12.4	10.4	10	12	14	10	12	18.864
PKJ 0804	8	4	8	79.9	18.5	16	18.5	14.4	10.4	10	14	16	10	12	21.774
PKJ 0806	8	6	8	82.2	18.5	17	18.5	14.4	12.4	12	14	16	12	14	23.234
PKJ 1006	10	6	10	98.3	21	17	21	17.6	12.4	12	17	19	12	14	25
PKJ 1008	10	8	10	102.6	21	18.5	21	17.6	14.4	14	17	19	14	16	37.613

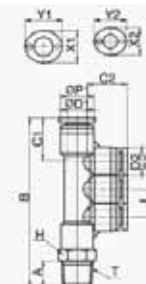
快插接头

持续创新 引领未来



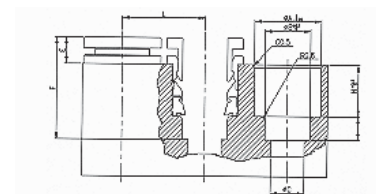
标准型

PKD 异径三分歧公头



型式	ΦD1	ΦD2	T	B	C1	C2	ΦP1	ΦP2	J	A	H	X1	Y1	X2	Y2	重量/g
PKD 0604-01	6	4	R1/8	64.7	17	16	12.4	10.4	10	8	12	12	14	10	12	26.33
PKD 0604-02	6	4	R1/4	0	17	16	12.4	10.4	10	11	12	12	14	10	12	32.95
PKD 0804-02	8	4	R1/4	70.9	18.5	16	14.4	10.4	10	11	14	14	16	10	12	37.11
PKD 0806-02	8	6	R1/4	0	18.5	17	14.4	12.4	12	11	14	14	16	12	14	38.53
PKD 0806-03	8	6	R3/8	74.2	18.5	17	14.4	12.4	12	12	17	14	16	12	14	45.88
PKD 1008-03	10	8	R3/8	90.6	21	18.5	17.6	14.4	14	12	17	17	19	14	16	65.45

CAS 头



MODEL	φD	φA	φB	φC	D	E	F	H	I	L	X	Y	重量/g
CAS-N04	4	8.1	4.2	2.5	11	4.7	16	7.8	3.5	11	12	10	3.25
CAS-N06	6	10	6.2	4	13	5	17.2	8.2	4	13	14	12	3.72
CAS-N08	8	12	8.2	6	15	4.8	18.2	9.2	4.5	15	16	14	4.43
CAS-N10	10	15.1	10.2	8	18	5.8	21	10.2	5	18	19	17	4.45
CAS-N12	12	17.7	12.2	10	22	5.2	22.4	12.2	5	22	21	23	5.1

气动辅助元件

辅助元件
接头
气管